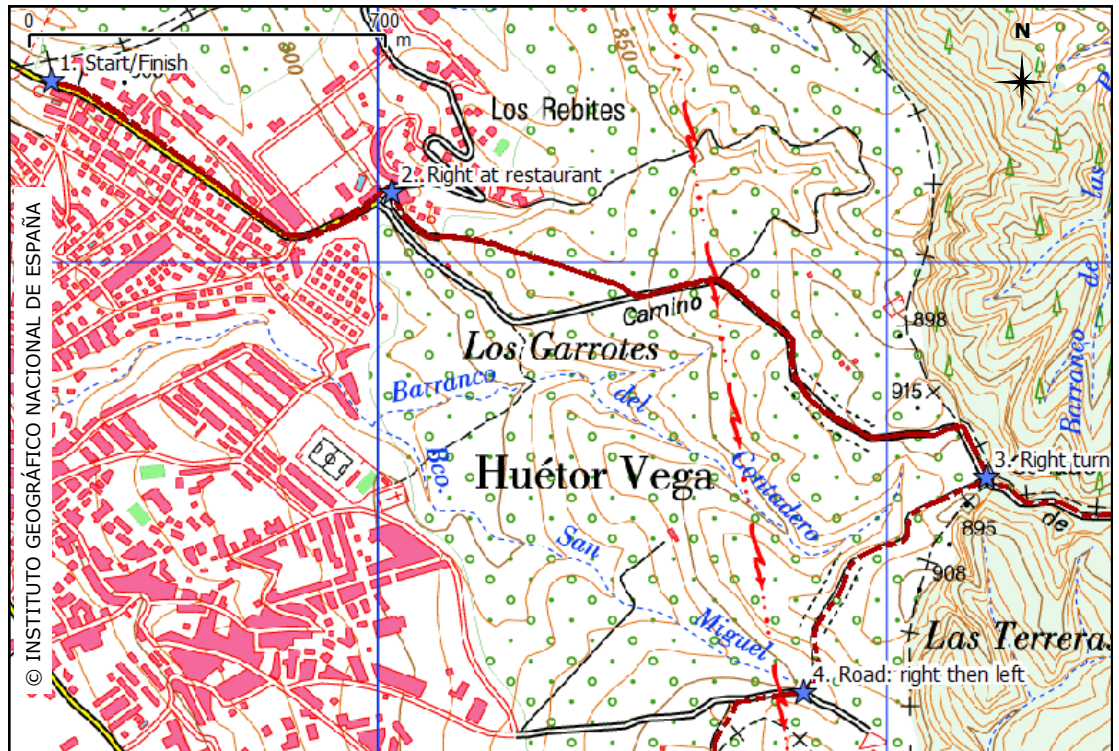


Camino de los Neveros - Monachil

This walk hugs the edge of the urban area between Granada and Monachil, making it very easily accessible. The surroundings are perhaps not as pristine as in other areas, but this is more than made up for by great views of Granada, the high mountains of the Sierra Nevada, and the Monachil and Genil valleys. Part of the walk uses the *Camino de los Neveros*, a route used historically to collect snow from the high mountains for the refrigerators of Granada. Monachil has several cafés and restaurants for a break along the route.

1. From the city bus stop, carry on along the road. After about 500m, where there is a bus shelter on the left, follow the road around to the left.
2. Cross the roundabout and almost straight away on the right you will see *Restaurante Las Perdices*. Take the right turn by the restaurant. The road goes quite steeply uphill and then turns into a dirt track - the *Camino de los Neveros*, which is marked as a right of way or *Vía Pecuaría*.



Getting there

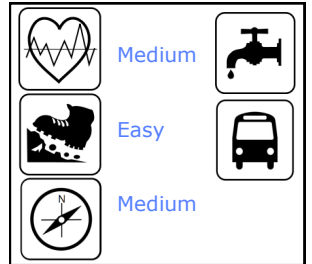
By car: From Granada, take *Avenida Cervantes*, accessed either from central Granada via *Paseo de la Bomba* or from the southern ring road (A-395, *Ronda Sur*). Coming from central Granada, cross the first two roundabouts and turn left at the third (signed *Hotel los Rebites*). From the ring road, take the *Avenida Cervantes/Huétor Vega* exit, take the exit marked *Avenida Cervantes* on the roundabout and take a sharp right at the next roundabout (signed *Hotel los Rebites*). Follow the road snaking uphill until you enter Huétor Vega. On the left is where the number 9 bus route ends and this walk starts, but you can continue driving to save walking along the road. After about 500m, where there is a bus shelter on the left, follow the road around to the left. When you get to a roundabout, stop and park. Start the walk from point 2.

By bus: Take Granada city bus number 9 to the end of its route at *Los Rebites*. Alternatively, take suburban bus 184 from *Paseo de los Basillos* to the stop called *D.G. Tráfico* and start the walk from point 2. (30 minutes, 24 services per day M-F, 15 Sa, 13 Sun). See www.treksierranevada.com/getting-around for more info and links to current timetables.

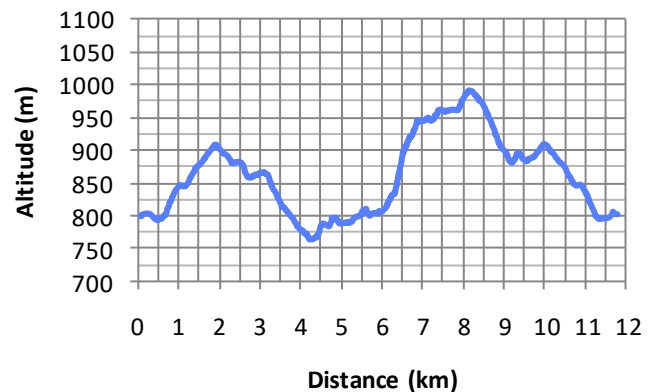
From Monachil: The circuit can also be started from Monachil village. Start at point 9.

Key Facts

Length	12 km
Time	3h 30 min
Min/Max Altitude	765 m / 990 m
Accumulated height difference	438 m
Season	Spring, Summer Autumn



Note: times and distances refer to full route to/from bus stop on the edge of Huétor Vega. To/from *Las Perdices* restaurant 10.5km / 3h 10 min; main loop to/from Monachil 7.5 km / 2h 30 mins.



DISCLAIMER: While we have made every effort to ensure that this information is accurate, conditions can change, and you are responsible for your own safety.

© Trek Sierra Nevada, January 2011
www.treksierranevada.com



3. Once you get beyond the houses, the views of the Sierra Nevada soon open up. The track climbs quite steadily uphill for just over 1km, until you get to a short downhill section and some rather dilapidated signs, where you turn right (marked *Cajar* and *Cementario*).

4. After 600m, you reach a road. Turn right along the road for 100m then turn left down a path, which later turns into an asphalt road with a park area on one side.

5. At the bottom of the hill, you get to a square with a bus stop (*Plaza San Miguel*). Turn sharp left downhill towards the river

valley. (NB start here if you take the 184 bus). Continue into the valley, ignoring access roads to properties on the left and right. The road turns into a dirt track.

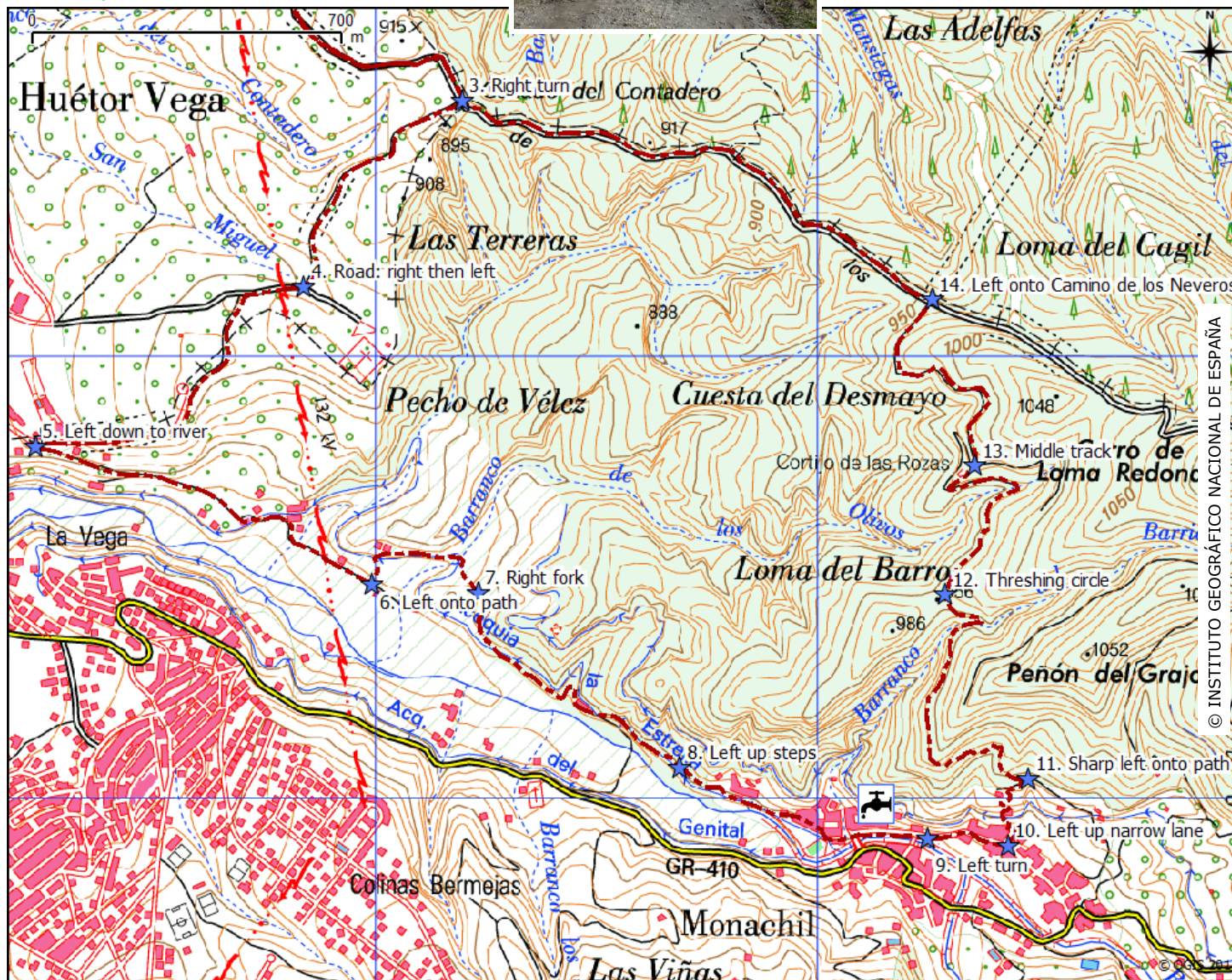
6. When you see a small white building (about 850m from the square), take the path to the left about 30m before it. This takes you up a



steep slope, and the top of which are some derelict buildings: bear round to the right here.

7. After about 300m, take the right fork in the path. Shortly after this you get to some ruins. Bear right down a stone path and cross the small bridge over an irrigation channel (*acequia*). Turn left and follow the path alongside the acequia.

8. After a further 500m or so, take the steps up to the left, and then bear right on Calle Albaricoque, which takes you into Monachil village.



9. Carry on through the village with the river to your right. Turn left on *Calle Madre Trinidad Carreras* and after 200m go left up a narrow lane (*Calle Tejares*, **10**). The lane turns into steps and then a zigzagging concrete path winding steeply uphill. On this section, keep to the left of the first house and to the right of the second. You will come out onto a surfaced road. Go right along the road for a few metres, until you get to an animal feeding trough and some railings.

11. Take the small path to the left and doubling back on yourself.

12. Follow this path uphill and round the

side of the slope for about 800m until you get to a stone threshing circle. Go round the right hand side of the threshing circle and then straight on, following the contour of the slope.

13. After about 600m, after you pass a ruined *cortijo*, take the middle of three tracks, which heads up to the left.

14. After a further 600m you rejoin the *Camino de los Neveros*. Turn left and follow this back to the starting point. If you have started in Monachil or at *Plaza San Miguel*, turn left at point **3** to complete the loop.

