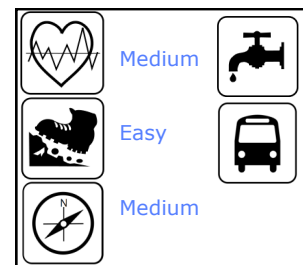
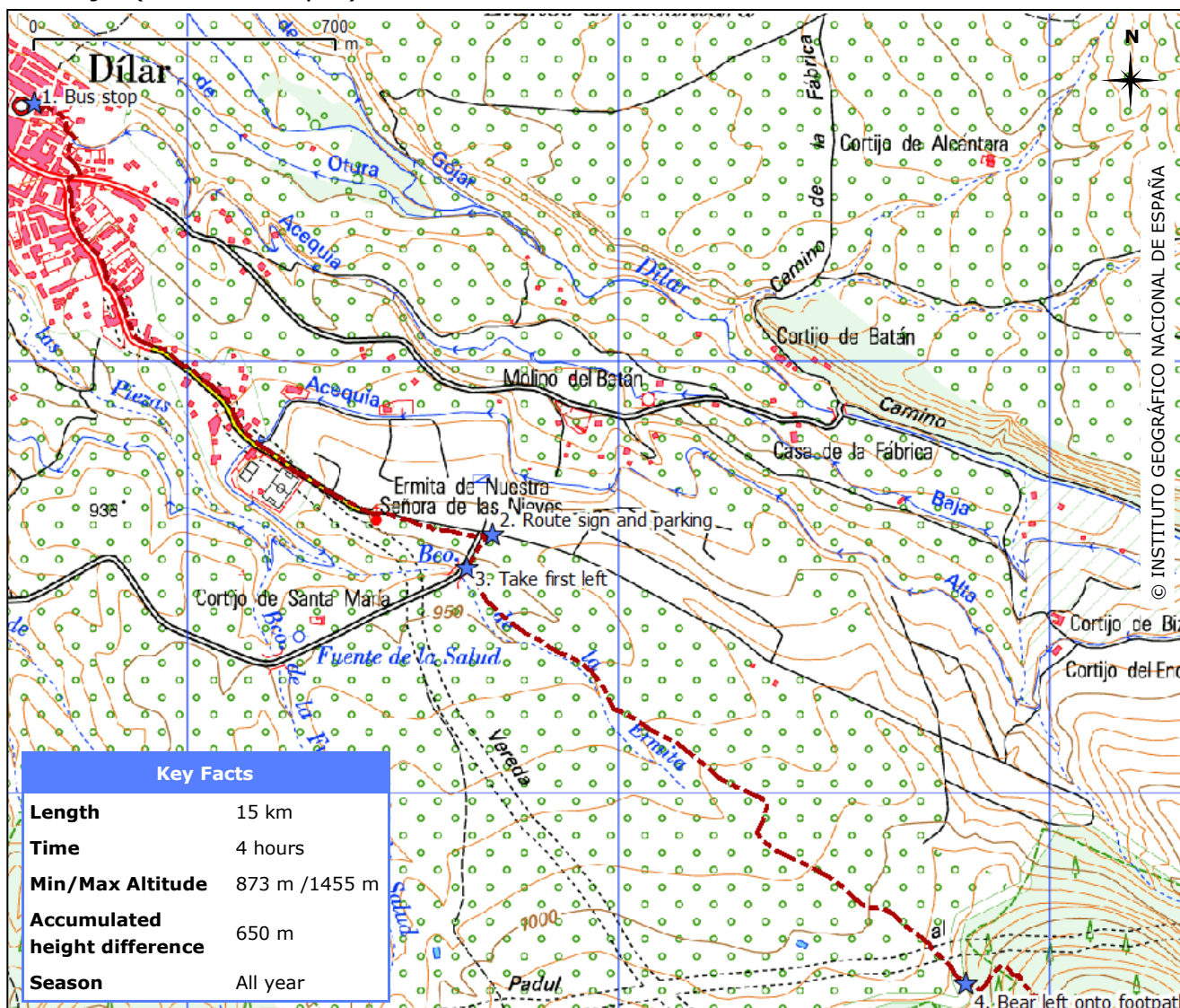


# Dílar - Ermita Vieja - Cerro de Montellano

## Version B: Starting in Dílar Town Centre



A pleasant walk through pine forests suitable for all seasons. From Cerro de Montellano there are fantastic views of the Sierra, including Cerro del Caballo (3011m). Also takes in two attractive chapels: *Ermita Nueva* (the new chapel) and *Ermita Vieja* (the old chapel).

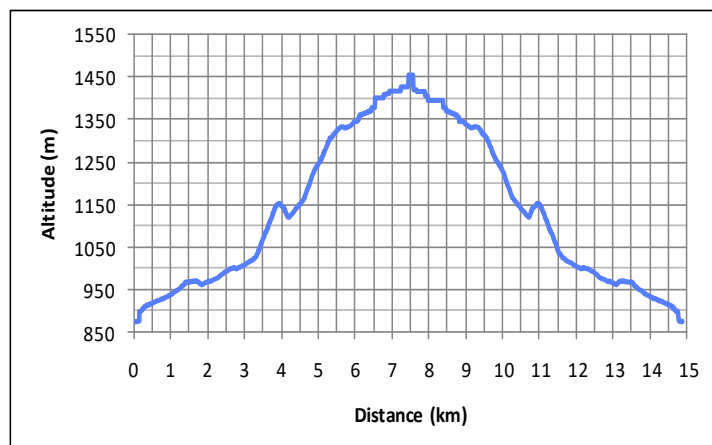


1. From the bus stop, continue along the road and take the right fork (signed *Rio Dílar* etc.); when you get to a Stop sign, turn right up the hill and follow the road round to the left. When you get to a T-junction, dogleg right then left. After 200-300m, you will see a tower and a wall with battlements - take the left fork here. Carry on until you get to an attractive chapel (the *Ermita Nueva*).

2. 200-300m past the *Ermita* you will see a small parking area and an information panel describing the *Silleta de Padul* walk. We will follow part of this route, which is marked with wooden posts with white and yellow markings, although this is a little haphazard, and there are no markings on the first section.

3. Follow the asphalted road round to the right and then the first farm track on the left.

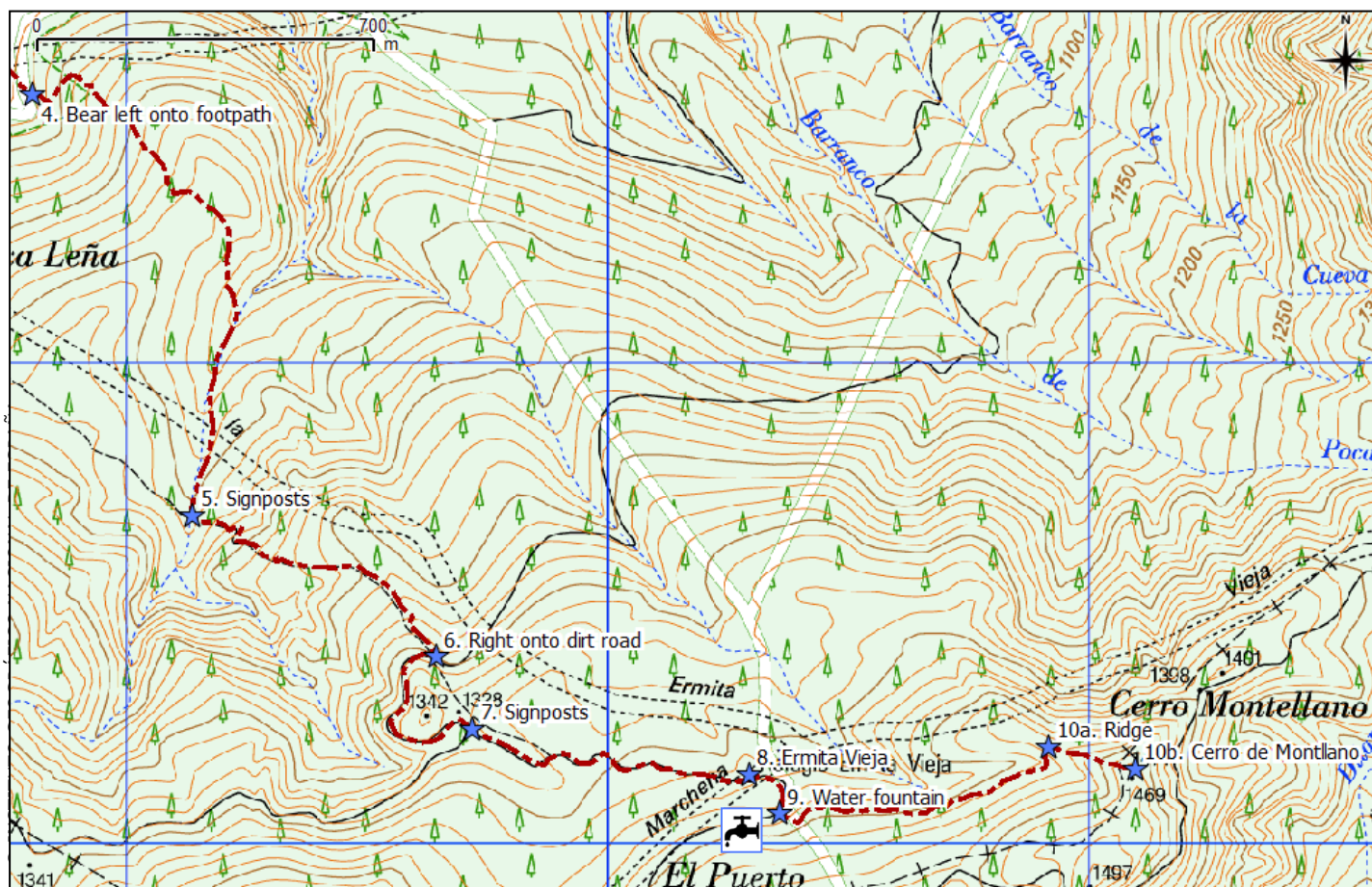
4. When you get to a wooded area, bear left up a footpath (marked with a post).



**D**ISCLAIMER: While we have made every effort to ensure that this information is accurate, conditions can change, and you are responsible for your own safety.







**5.** Take the path up through the forest, following the wooden posts with yellow and white markings and signposts to *Ermita Vieja*.

**6.** When you reach a dirt road, turn right.

**7.** About 400m up the road you'll see some signposts. Carry on in the same direction (marked towards *Ermita Vieja*). The Ermita is about 700m further on (**8**)



**9.** About 100m past the *Ermita* there is a water fountain where you can refill drinking water. ➡

Take the footpath on the opposite side of the road to the fountain, and follow the signpost towards *Picacho A*.



**10.** When you come out of the trees onto a ridge, turn right up the ridge by a wooden post. It's a further 200m to the top, where you can enjoy panoramic views.



### Getting There

**By Car:** From Granada, take the E-902/A-44 towards Motril. Take exit 139 and go alongside the motorway, past a service station, then turn left at the roundabout (signed *Otura, Alhendín*). Follow signs for Otura and then Dílar. After entering Dílar, carry on up the hill and then turn right following the one-way system; you will see the bus stop on your right. Park in the town centre or drive to the car park at the trailhead proper, following directions given in point **1** (recommended). Note that if you have your own transport, Version A of this walk (*Dílar - Ermita Vieja - Cerro de Montellano*, *Version A Starting from Aula de la Naturaleza*) is another option.

**By bus:** Bus 171 serves Dílar, with at least 19 services a day (45 min). See [www.treksierranevada.com/getting-around](http://www.treksierranevada.com/getting-around) for more info and links to current timetables.

© Trek Sierra Nevada, July 2017 •

May not be altered or sold • [www.treksierranevada.com](http://www.treksierranevada.com)

