

GR-7 Busquístar - Capileira

This section of the GR-7 long-distance walking path goes through the heart of the Alpujarras. Make your way through the orchards, terraces and open countryside between the picturesque white villages of Busquístar, Pórtugos, Atalbéitar, Pitres, Capilerilla and Capileira. There are plenty of places along the way to stop for a drink or a snack. As you near Capileira you get some spectacular views of the Sierra Nevada.

Medium

Easy

Medium

Key Facts	
Length	11.5 km
Time	3 h 30 mins
Min/Max Altitude	1139 m / 1583 m
Accumulated height difference	612 m asc / 301 m desc
Season	All year

DISCLAIMER: While we have made every effort to ensure that this information is accurate, conditions can change, and you are responsible for your own safety.

Note: Distances and timings are one-way.



1. From the church in Busquístar, head uphill towards the main road, and turn left along it.

2. After about 300m, take the track turning off to the right (marked with GR-7 post and red and white lines painted on the back of a road sign).

3. After 200m, bear slightly up to the right when you get to a farmhouse.



4. At the next farmhouse (after a further 250m), keep right, skirting round the edge of a field.

5. At the end of the path, turn left then right onto the main road. Follow this for about 500m.

6. You will see a chapel on your right. To the left of this there is a drinking fountain (Fuente Agria) with naturally sparkling spring water. The water from each of the spouts tastes slightly different. Turn right onto a path just after this (marked).

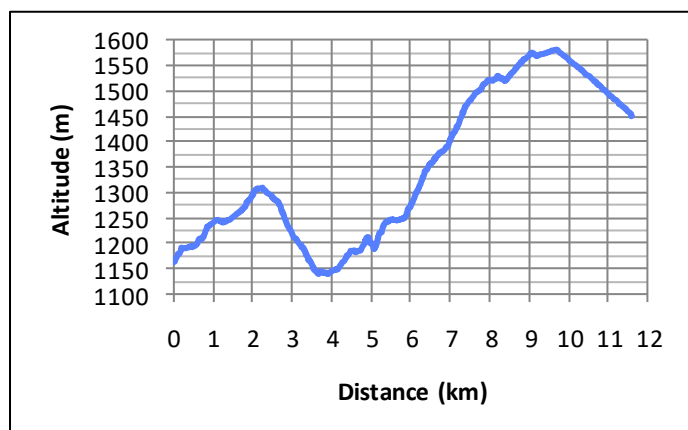


7. When you reach Pórtugos (about 300m) you'll see a sign pointing back to Busquístar. Turn left onto the road here

and follow it round to the right. At the T-junction, turn left and immediately cross the road to playground/viewpoint on the other side.

8. Just after the viewpoint, take the turning down to the right, then turn left. On the next section, follow signs for Ruta Medieval as well as the GR-7 signs.

9. Follow the path (which turns into a wider track) downhill for about half a kilometre. Turn left at a T-junction, follow the track zigzagging downhill for about 250m, and then turn right (marked).



10. Follow the road towards Pitres. After 600m, you'll reach a turning for Ferreirola where you should keep going straight on. After another 150m, on a sharp bend in the road, take the path off to the left (marked).

11. Follow this path across a stream and up into Pitres. Go straight across the main road, and follow this street until you get to the main square and church.

12. Turn right just after the church. At the edge of the village you'll see a GR-7 sign towards Capileira (not to be confused with Capileira - a different village!). Bear right here.

13. When you reach Capilerilla, keep on

the path, which skirts round to the right and then takes you into the village. You'll see a sign back towards Pitres. Turn left here and head through the village. Take the street marked *Camino de Bubión*. You'll get to another GR-7 signpost; bear left straight after this.

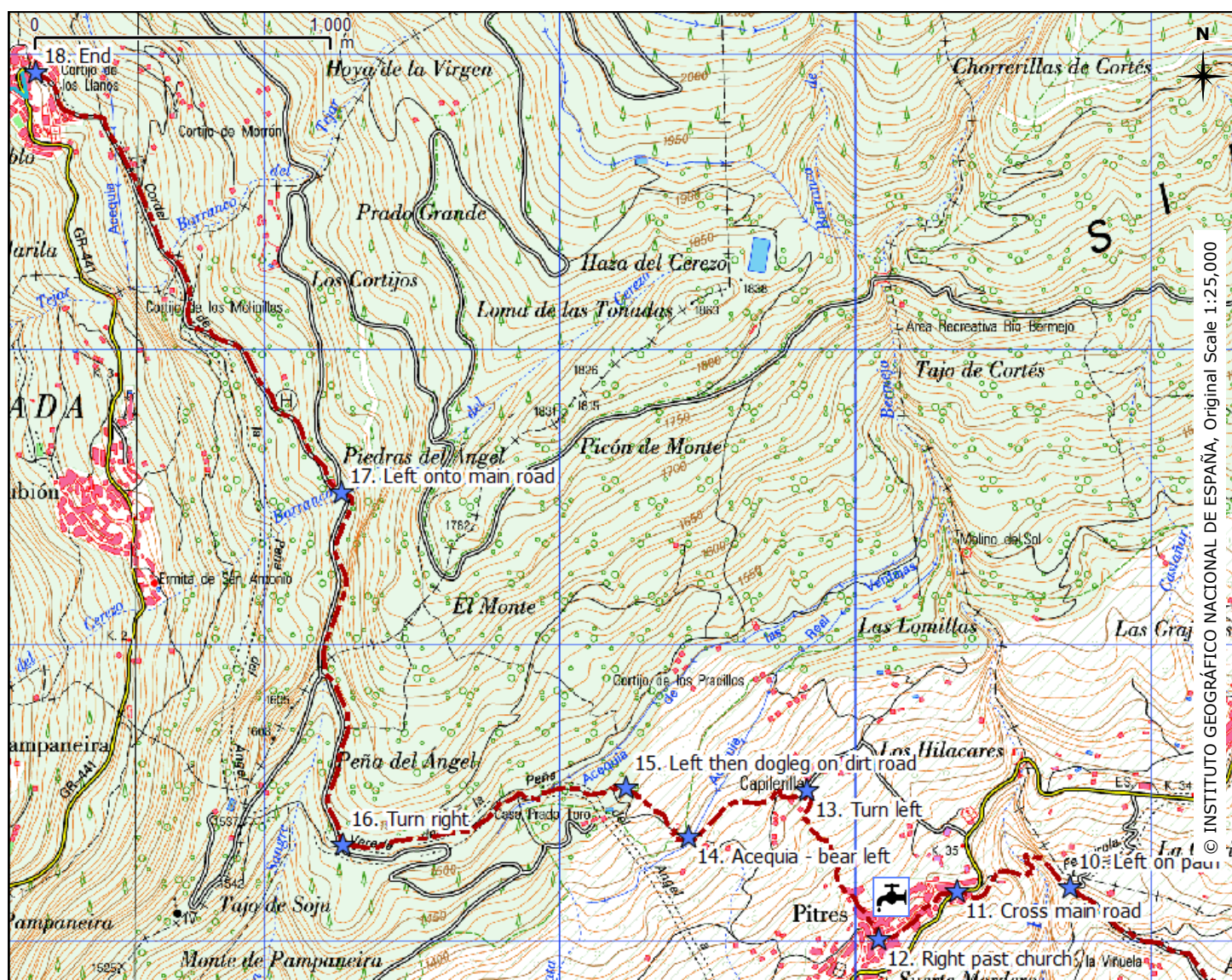
14. After about 400m, you cross an *acequia* (irrigation channel) then bear up left. The next section is a little confusing with lots of paths, but keep right. After about 200m you get to GR-7 posts marking the path you should take to the left (and indicating the path not to take with a cross).

15. Follow this path for approx. 150m,

then when you meet another path, turn left. Just after this you'll meet a dirt road. Dogleg right and almost immediately left onto another dirt road.

16. Follow this road for 1km, then turn right at the junction. Note that at this point you are leaving the GR-7. [To continue on the GR-7 into Bubión, go straight ahead and follow the signs.]

17. Continue on the dirt road for 1.25km, ignoring side tracks. On this section there are some amazing views of Capileira with the Sierra Nevada behind. Turn left onto the main (asphalt) road. Walk down this road for 2km until you reach Capileira.



Getting There

By Car: From Granada, take the E-902/A-44 towards Motril. Take exit 164 and take the A-348 towards Lanjarón. Carry on past Lanjarón and after about a further 8km turn left onto the A-4132, marked towards Trevélez (the turning is just after you enter Órgiva). Follow this road until you get to Busquístar.

By Bus: Capileira and Busquístar are served by Alsa services from Granada bus station (2-3 per day), which also stop at other Alpujarran towns, including Órgiva, Lanjarón and Trevélez. You can use the same buses to return to your starting point at the end of the walk.