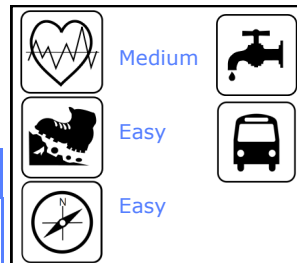


# Restábal - Pinos del Valle

A pleasant walk between two white villages, with sweeping views across the Lecrín Valley, the Béznar reservoir and beyond to the Sierra Nevada. Stop for a drink and a snack at a cafe-bar in Pinos del Valle before heading back to Restábal or, if you have the energy, extend the trip by hiking down to a picnic area just above the reservoir.

Key Facts	
<b>Length</b>	12 km
<b>Time</b>	3 hours
<b>Min/Max Altitude</b>	562 m / 797 m
<b>Accumulated height difference</b>	430 m
<b>Season</b>	Autumn, Winter,



*NB times and distances are there and back.*

**1.** From the centre of Restábal, take the road signposted towards Pinos del Valle. Before you leave the village, take a right at a curious looking mini-roundabout onto *Calle El Calvario*.

**2.** The road turns into a dirt road. Follow it uphill for about 2 km, then turn left onto

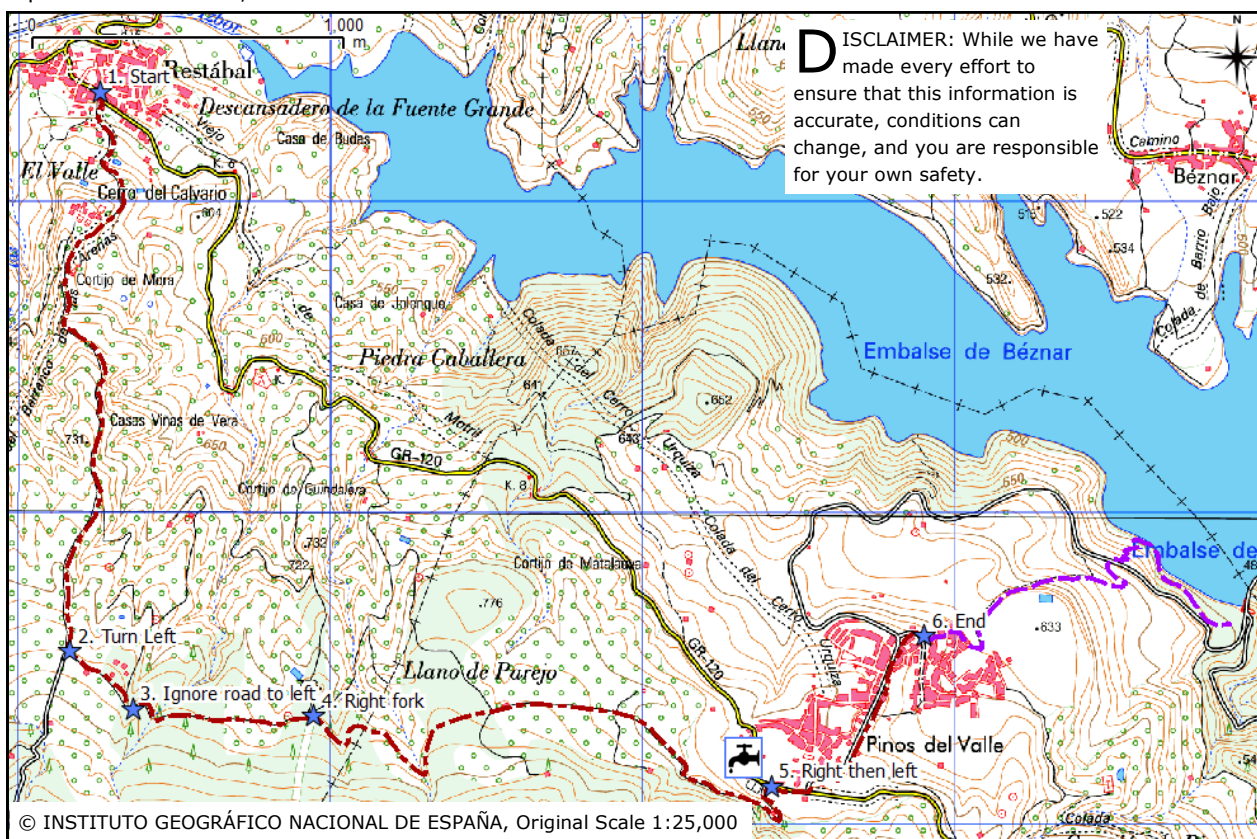
another dirt road.

**3.** After about 300m you pass a campsite. Keep straight on here, ignoring the road down to the left.

**4.** 600m further on, take the right fork onto a smaller dirt track.

**5.** Keep going straight ahead on the main track, ignoring side tracks to the left and right, for about 2km. The track winds downhill to Pinos del Valle. There is a drinking fountain on the left by a basketball court. Turn right onto the main road and then left into the village.

**6.** The main route ends here, but you could extend it by taking the well-marked *Alauxa* path down to a picnic area by the Béznar reservoir (1.6km each way, vertical height diff. 160m). It's a pretty trail with some great views over the reservoir. To get to the start, carry on through the village, turn right at the roundabout and follow the wooden signs.



## Getting there

**By car:** From Granada take the E-902/A-44 towards Motril. Come off at junction 160, marked *Lecrín El Valle*. Pass the turning for *Mondújar*, keeping right on the main road. Turn left at the roundabout. After a few hundred metres, you will see a small BP garage on the left - turn right about 100m past this, following signs to *Restábal*, *Melegis* and *Albuñuelas*.

After about 4.5km you'll get to Restábal. Park somewhere convenient in the village.

**By bus:** Take the Alsa bus service from Granada bus station. There are 5 buses a day to Restábal on Monday-Friday and 1 a day on Saturdays (1 hour). On Monday-Friday only, 2 buses a day continue to Pinos del Valle, so it might be possible to go by bus in one direction. See [www.treksierranevada.com/getting-around](http://www.treksierranevada.com/getting-around) for more info and links to current timetables.

