


San Francisco – Haza Mesa


Always above the treeline, this walk offers very open views – up to the highest peaks, down to the foothills and across to the neighbouring range of *Sierra de Huetor*. Although you are very close to the ski station, you wouldn't know it, because the infrastructure is hidden behind a ridge.


The route is probably best in late spring or autumn, when it isn't too hot but there's no snow on the ground. When it's open, water is available at the *Albergue San Francisco*, which is around 2 km from the start/finish of the walk.

Key facts	
Length	14 km
Time	4 h 15 mins
Min/Max Altitude	1972 m / 2334 m
Accumulated height difference	430 m
Season	Spring, Summer Autumn





Medium





Medium





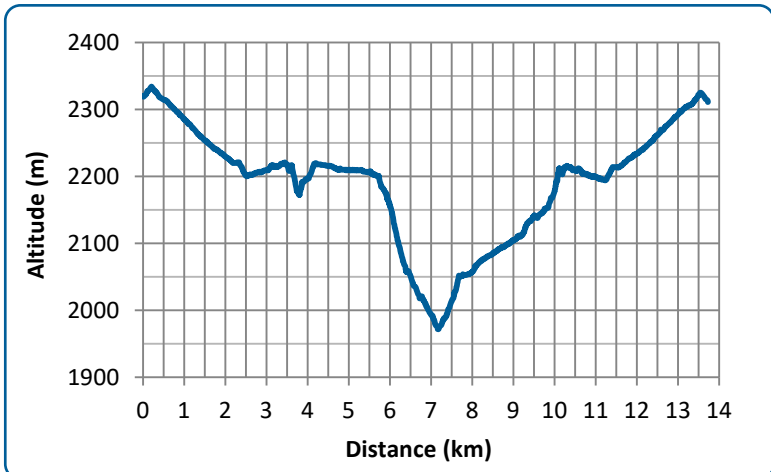
Medium



Getting there

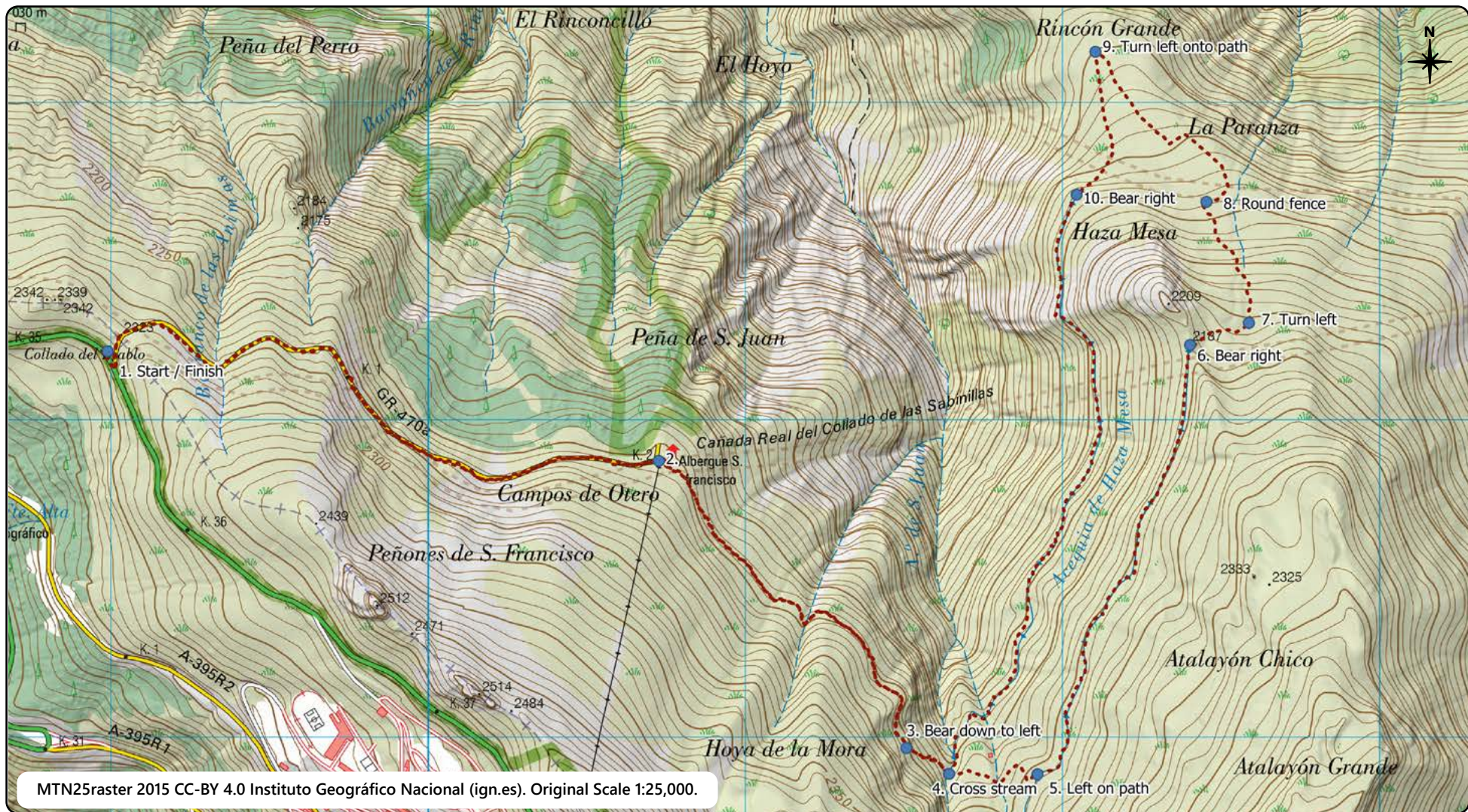
By car: From Granada, take the A-395 towards Sierra Nevada. Turn off left just before the ski station (signposted *Parking de los Peñones*) and follow the road up until you get to km 35 of the road. Just after this, you will see a chained off dirt road to the left. Park opposite this on the right-hand side of the main road.

By bus: This walk is not easily accessible by bus.



DISCLAIMER: While we have made every effort to ensure that this information is accurate, conditions can change, and you are responsible for your own safety.





1. Take the dirt road opposite where you have parked.
2. After about 2 km, you will reach the *Albergue San Francisco*. Take the path bearing slightly right that follows the contour of the hill.
3. After about 1.25 km, bear down to the left towards the stream.
4. Cross the stream and take the path climbing steeply uphill.
5. At the top of the steep climb, turn left on the path.
6. Follow the path following the contour for 1.5 km, then bear right around a rocky outcrop, heading slightly downhill.
7. After 200 m, take a small path down to the left.
8. After 400 m, go round a fenced-off area and continue downwards on the path that starts below the fenced area.
9. When you meet another larger path, turn sharp left (about 350 m after the fenced-off area). The path climbs quite steeply.
10. Bear right at the top of the steep section and follow the path along the contour back to the stream crossing (4).